

Development Opportunity: Elizabeth House, Holding Street, Rainham, Gillingham, Kent ME8 7JP



An exciting opportunity to purchase a site with a positive pre-app for 13 residential flats located in the centre of Rainham, Kent.

Site

The site comprises the existing Elizabeth House building, a single 1.5-storey building with an adjacent parking area. Vehicular and pedestrian access is via Holding Street. The proposed scheme includes the demolition of the existing building and the erection of a high quality and contemporary scheme of 13 residential flats. The proposed scheme will also retain existing rights of passage for adjoining neighbouring properties facing the High Street. The site is bound by commercial buildings to the west and residential dwellings to the east. The site extends to approximately 0.32 ac (0.13 ha) and is generally level in topography.

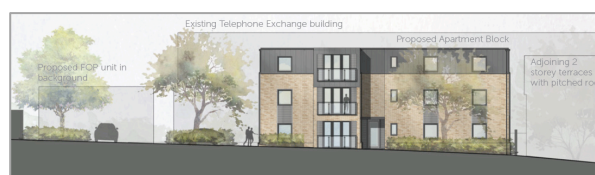
Location

The site is situated in the centre of Rainham, which provides a good range of local services including a small shopping centre, supermarkets, three secondary schools, and a train station. Comprehensive services and amenities are provided in Rochester, Chatham and Gillingham, approximately 2.5 miles to the west. The site is located on Holding Street just off of the A2 London Road, which provides access to the M2 and M20. Rainham railway station is situated approximately 0.25 miles to the northeast, which provides regular direct services to both London St Pancras and London Victoria in journey times ranging from 54 minutes to 96 minutes.



Proposed scheme

The proposed scheme recently received a positive pre-app from Medway Council for the demolition of the existing Elizabeth House building and the erection of a 3 storey apartment block comprising 13 residential flats including 2 no. 1 bedroom units and 11 no. 2 bedroom units with associated parking and cycle storage.



Method of Sale

Unconditional offers are invited for the freehold interest of this site as a whole.

Viewing

Viewings are by appointment only, please make contact to discuss viewing arrangements.

Tenure

The freehold of the site is being sold with vacant possession. Full title information will be included in the Information Pack.

Timing

Offers are invited on an unconditional basis only and should include all proposed overage and clawback provisions with a completion date of no later than 8th March 2021.

Sale Information Pack

A comprehensive Information Pack will be made available to the shortlisted parties.

Contact

For further information, please contact:

Tim Mitford-Slade

Tim.Mitford.Slade@StruttandParker.com

07740 678 475

George Gibbons

George.Gibbons@StruttandParker.com

07557 673375

Megan Richardson

Megan.Richardson@StruttandParker.com

07342 949656

IMPORTANT NOTICE

Strutt & Parker gives notice that: 1. These particulars do not constitute an offer or contract part thereof. 2. All descriptions, photographs and plans are for guidance only and should not be relied upon as statements or representations of fact. All measurements are approximate and not necessarily to scale. Any prospective purchaser must satisfy themselves of the correctness of the information within the particulars by inspection or otherwise. 3. Strutt & Parker does not have any authority to give any representations or warranties whatsoever in relation to this property (including but not limited to planning/building regulations), nor can it enter into any contract on behalf of the Vendor. 4. Strutt & Parker does not accept responsibility for any expenses incurred by prospective purchasers in inspecting properties which have been sold, let or withdrawn. 5. If there is anything of particular importance to you. Please contact this office and Strutt & Parker will try to have the information checked for you. Photographs and drawings made between 2018 / 2019. Particulars prepared November 2020. Strutt & Parker is a trading style of BNP Paribas Real Estate Advisory & Property Management UK Limited.