

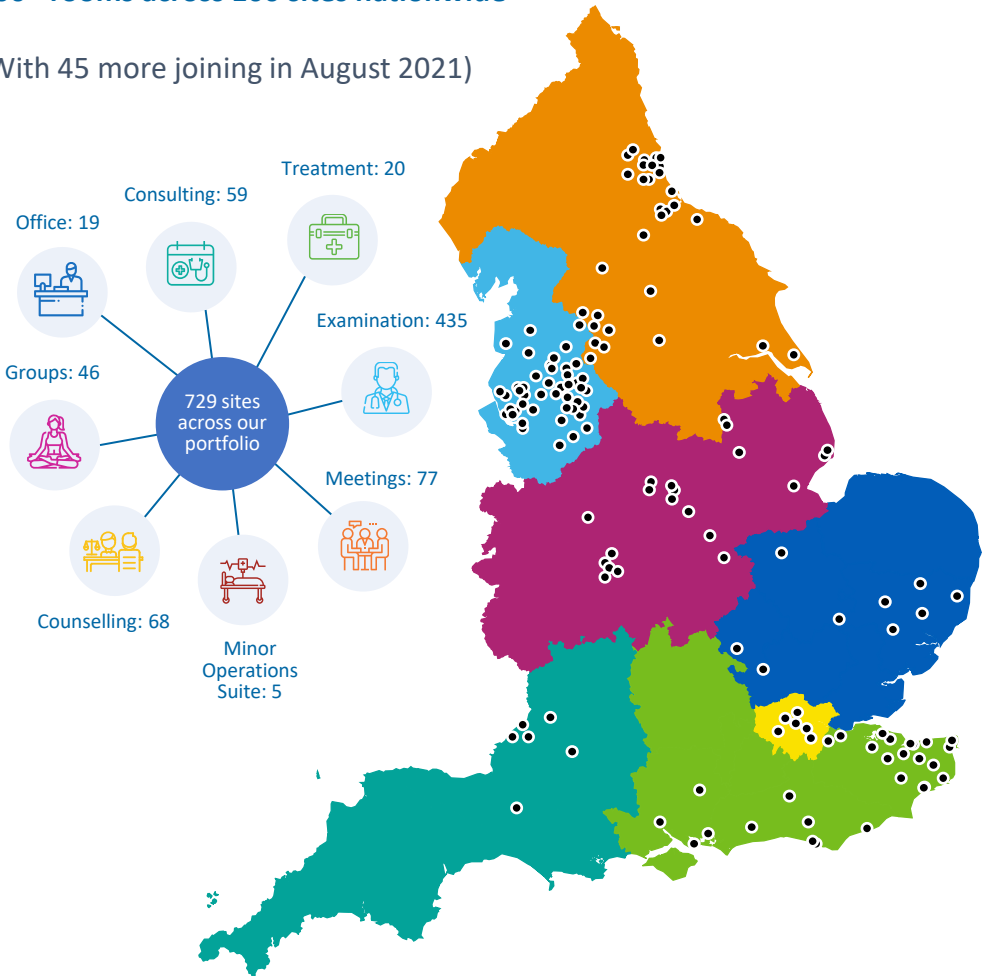
Growing NHS Open Space

During our pilot (2017-2019) we grew from 6 to 19 properties and welcomed 68,250+ bookings (a 10% increase). We launched our official booking platform in May 2019, and since then we have...

Expanded our portfolio

700+ rooms across 100 sites nationwide

(With 45 more joining in August 2021)



Grown the NHS Open Space community



2,400+ users
spanning NHS, private and community services



92,500+ bookings
made through our platform so far



565,500+ hours
of vital patient care being delivered

Created a more efficient NHS estate



98%
of bookings being paid for compared to **11%** during the pilot

=

More funds coming back to the NHS, and generating new funds



↑ 30.89%
continuous booking rate
↓ 3.52%
usage of non-booked rooms

=

Increased transparency on room usage, driving proactive estate management

Welcomed new health, wellbeing and community services



5%
Orthopaedics



5%
Mental health



5%
Diabetes treatment



4%
Sexual health



4%
Psychological therapies (IAPT)