

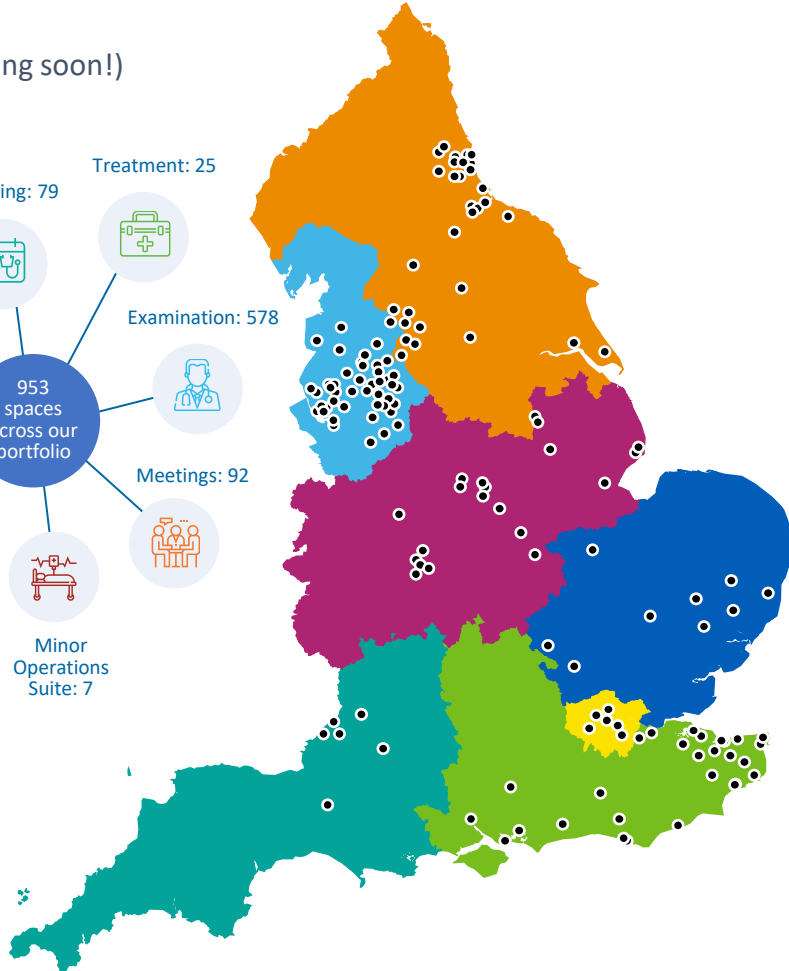
Growing NHS Open Space

During our pilot (2017-2019) we grew from 6 to 19 properties and welcomed 68,250+ bookings (a 10% increase). We launched our official booking platform in May 2019, and since then we have...

Expanded our portfolio

950+ rooms across 150 sites nationwide

(With more joining soon!)



Grown the NHS Open Space community



2,900+ users
spanning NHS, private
and community
services



107,000+ bookings
made through our
platform so far



655,000+ hours
of vital patient care
being delivered

Created a more efficient NHS estate



99%
of bookings being paid
for compared to
11%
during the pilot



More funds coming back
to the NHS, and
generating new funds



↑ 31.5%
continuous booking rate
↓ 3.29%
usage of non-booked
rooms



Increased transparency
on room usage, driving
proactive estate
management

Welcomed new health, wellbeing and community services



6%

Mental health



5%

Orthopaedics



5%

Diabetes
treatment



4%

Sexual health



3%

Physiotherapy