

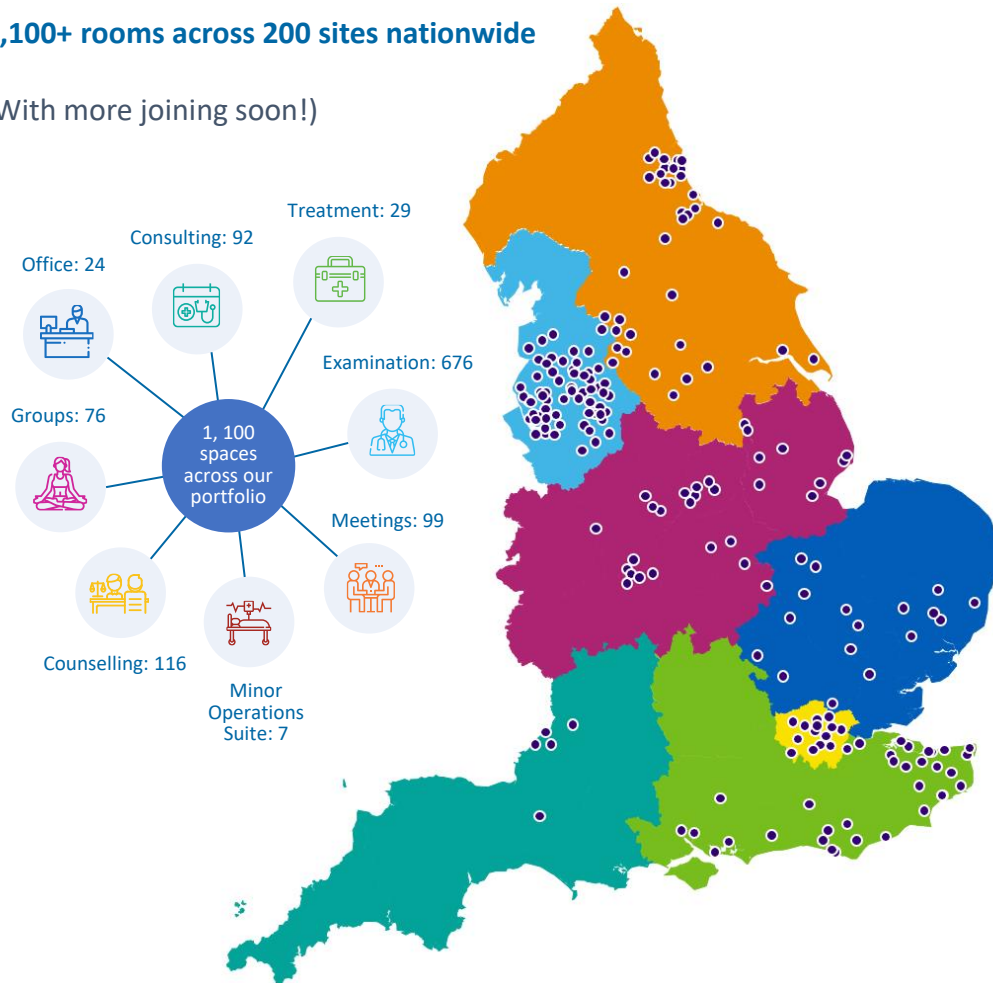
Growing NHS Open Space

During our pilot (2017-2019) we grew from 6 to 19 properties and welcomed 68,250+ bookings (a 10% increase). We launched our official booking platform in May 2019, and since then we have...

Expanded our portfolio

1,100+ rooms across 200 sites nationwide

(With more joining soon!)



Grown the NHS Open Space community



4,290+ users
spanning NHS, private and community services



228,086+ bookings
made through our platform so far



1,470,482+ hours
of vital patient care being delivered

Created a more efficient NHS estate



99%
of bookings being paid for compared to **11%** during the pilot



More funds coming back to the NHS, and generating new funds



↑ 31.8% continuous booking rate
↓ 4.4% usage of non-booked rooms



Increased transparency on room usage, driving proactive estate management

Welcomed new health, wellbeing and community services



5%

Mental health



4%

Podiatrists & chiropodists



3%

Diabetes treatment



3%

Community services



3%

Orthopaedics