

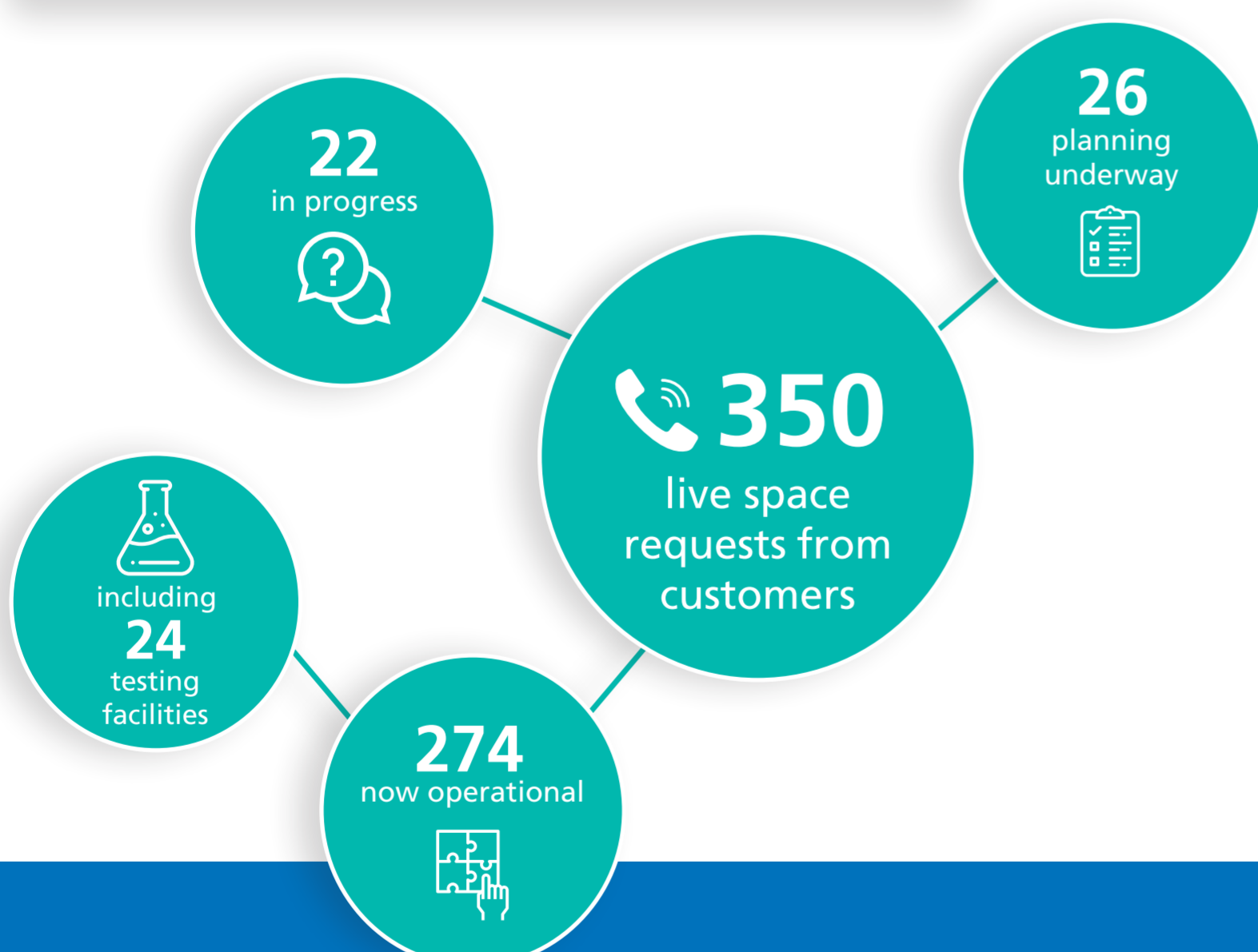
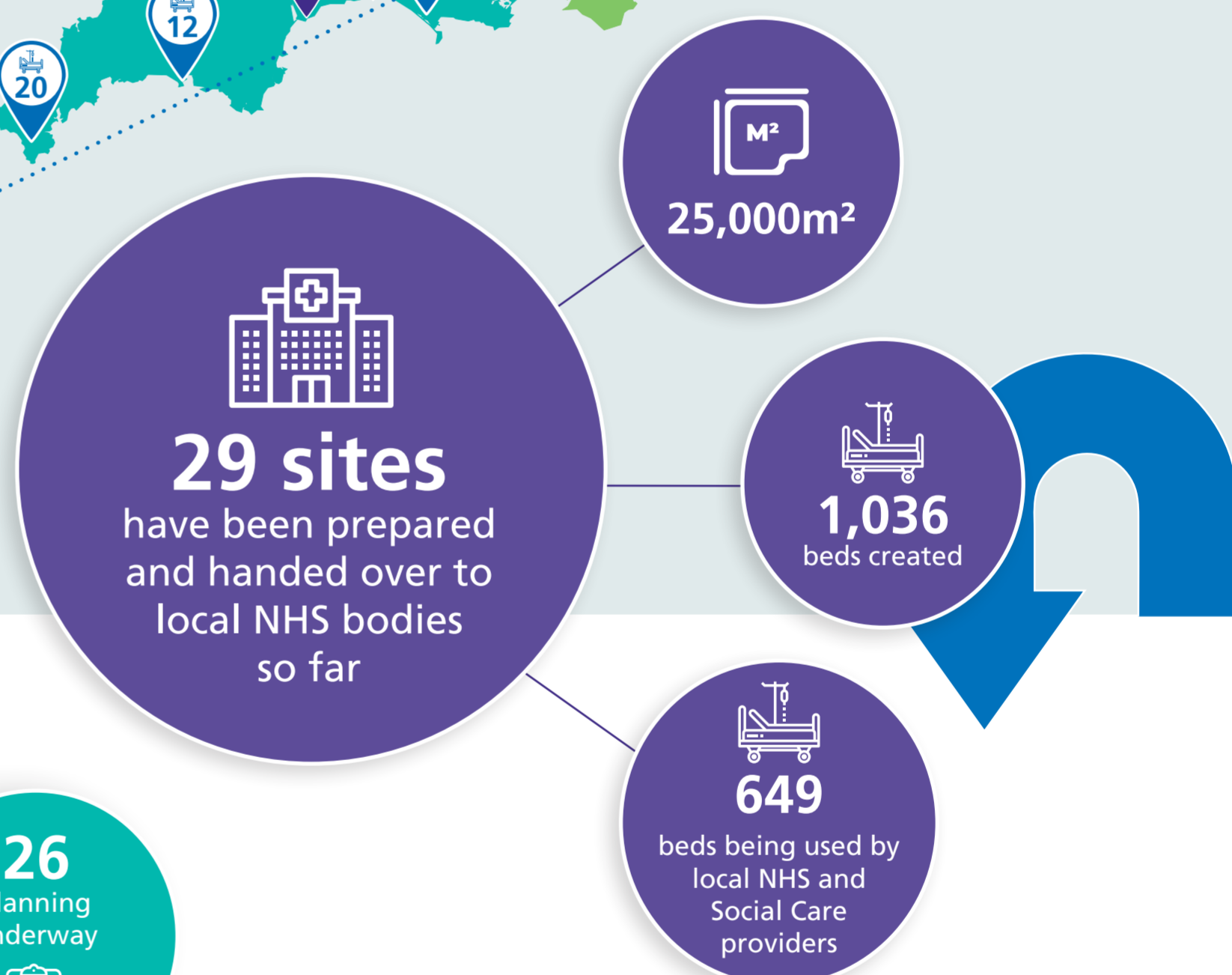
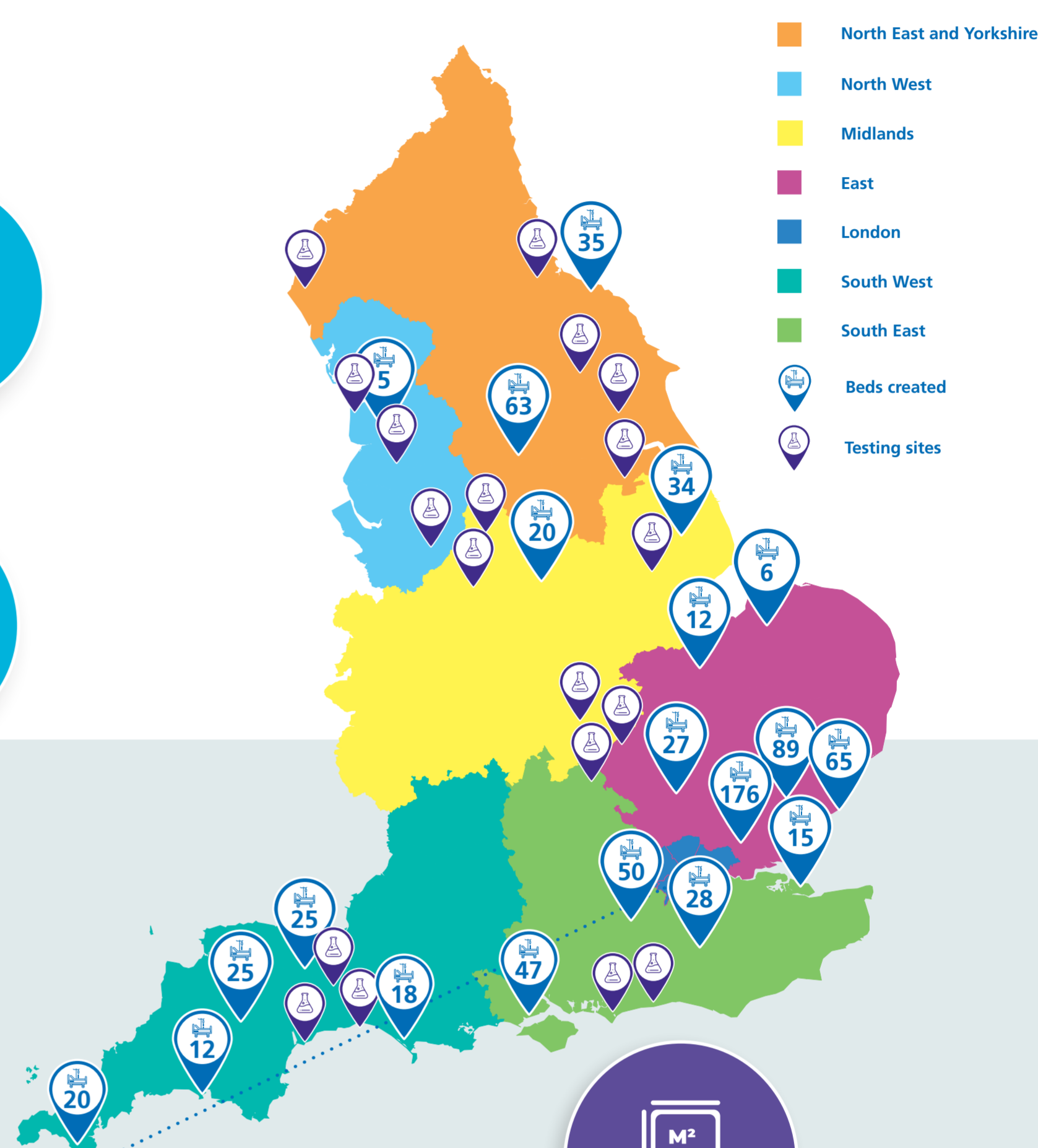
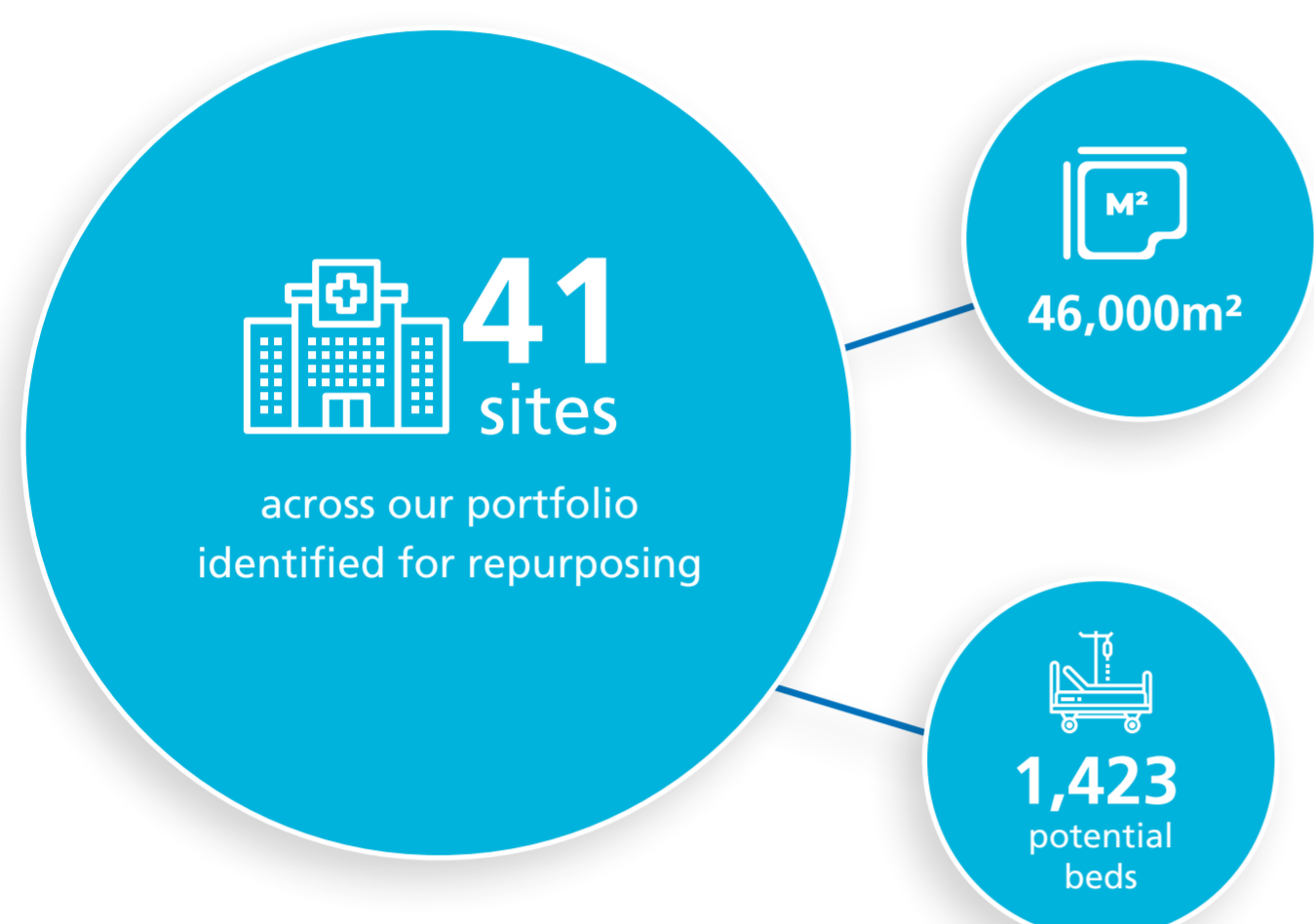
Supporting the NHS during Coronavirus (Covid-19)

Repurposing space to support clinical needs

At this unprecedented time, we are dedicated to supporting the NHS in their response to the pandemic, finding property options to provide urgent additional bed capacity and fast-changing requirements for space.

Our specialist strategic asset management teams are helping to repurpose space, recommission vacant space and reconfigure sites across the country. We're assessing vacant or underused space across our estate, putting it back into use to create more space for beds and working closely with our NHS partners to best match this additional capacity to local demand.

Creating more space for local treatment and testing



Repurposing and reconfiguring space

We're also working with our NHS partners to rapidly find solutions to their space requirements, adapting our estate to provide additional primary care capacity, or to provide flexibility of how GP services are provided to treat both Covid-19 and non-Covid-19 patients.

Data correct as of 23rd June 2020

Get in touch

We can assist you with planning and delivery of recommissioning or repurposing space across our estate, and are keen to work with you in the early stages to identify any additional estate or facilities management requirements.

Many of you will already be in discussions with us, and we encourage those who haven't to contact your local team or get in touch via our Customer Support Centre:

0800 085 3015

customer.service@property.nhs.uk

Beyond recommissioning and repurposing space, we have thousands of frontline staff working behind the scenes to provide safe, clean and well-maintained environments for our NHS colleagues and patients.

[LEARN MORE ABOUT OUR HIDDEN HEROES](#) →